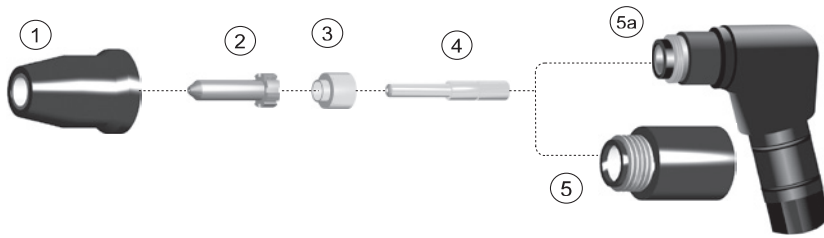


REPLACEMENT PARTS SUITABLE FOR THERMAL DYNAMICS®

PCH/M-35, PCH/M-40

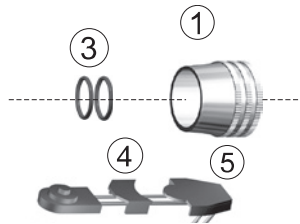


**Torch body features our patented design
US Patent #6,271,497**

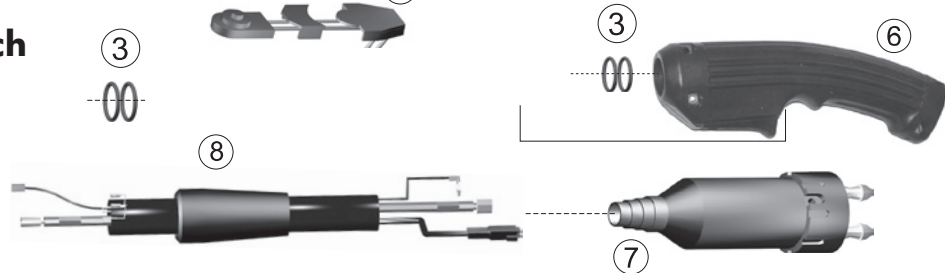
Item	Part No.	Ref. No.	Description	Std. Pkg	Item	Part No.	Ref. No.	Description	Std. Pkg.
1.	T-0272	9-6003	Shield Cup	1	T1331	9-6501	Tip, Drag, Long Life	10	
	T-0273	9-6004	Shield Cup, Crown,*9-6003, Req'd	1	3.	T-0269	9-6007	Gas Distributor	5
	T-1328	9-6503	Shield Cup, Long Life	1		T-1332	9-6507	Gas Distributor, Long Life	5
2.	T-0270	9-6000	Tip	10	4.	T-0103	9-6006	Electrode	10
	T-1074	9-6001	Tip, Drag	10		T-1333	9-6506	Electrode, Long Life	10
	T-1329	9-6002	Tip, Gouging	10	5.	T-0268	9-5809	Machine Torch	1
	T-1330	9-6120	Tip, HD	10	5a.	T-1075	9-5808	Hand Torch 90°	1
	T-2182	9-6502	Tip Gouging, Long Life	10		T-0267**	9-5807DURA	Hand Dura Torch, 70°	1
	T-1331	9-6500	Tip, Stand Off, Long Life	10					

ACCESSORIES

Machine Torch



Hand Torch



Item	Part No.	Ref. No.	Description	Std. Pkg	Item	Part No.	Ref. No.	Description	Std. Pkg.
1.	T-0157	8-4018	Nut	1	8.	T-1926	2-6057	Torch 90° with Leads, 50' & QD	1
2.	T-1077	7-3207	Mounting Tube	1		T-1921	2-6052	Torch 70° with Leads, 12.5' & QD	1
3.	T-0122	8-0533	O-Ring	1		T-1922	2-6053	Torch 70° with Leads, 25' & QD	1
4.	T-1623	8-4302	Switch Insert	1		T-1923	2-6054	Torch 70° with Leads, 50' & QD	1
5.	T-1624	8-4303	Switch Closure	1		T-1924	2-6055	Torch 90° with Leads, 12.5' & QD	1
6.	T-1040	9-5636-1	Handle	1		T-1925	2-6056	Torch 90° with Leads, 12.5' & QD	1
7.	T-1633	9-5836	Quick Disconnect	1	NS	T-1081	9-6103	PIP Wire Assy	1

** A UNIQUE DESIGN WHICH ENHANCES PERFORMANCE AND DIFFERS FROM OEM DESIGNS

Last update of this page: 17/11/2015. See Revision history for details.

THERMACUT®
THE CUTTING COMPANY

WWW.THERMACUT.CZ
TEL.: +420 556 423 418
SALES@THERMACUT.CZ

WWW.THERMACUT.DE
TEL.: +49 (0) 27 39 40 33 0
INFO@THERMACUT.DE

WWW.THERMACUT.COM
TEL.: 1-603-542-6715
CUSTOMERSERVICE@THERMACUT.COM

THERMACUT®, FHT-EX® AND EX-TRAFIRE® ARE REGISTERED TRADEMARKS OF THERMACUT S. R. O. AND MAY BE REGISTERED IN CZECH REPUBLIC AND/OR OTHER COUNTRIES. ALL OTHER TRADEMARKS ARE PROPERTIES OF THEIR RESPECTIVE OWNERS. THERMACUT IS NO WAY AFFILIATED WITH THERMAL DYNAMICS®. MOST THERMACUT PARTS ARE MADE FOR OR BY AN IBG COMPANY. PARTS INDICATED WITH A OEM ARE ORIGINAL PARTS MANUFACTURED BY THE ABOVE NAMED MANUFACTURER AND ARE BEING RESOLD BY THERMACUT. THERMACUT RESERVES THE RIGHT TO SUBSTITUTE OEM PARTS IN PLACE OF THERMACUT PARTS. VALID FROM MAY 2016 • PREVIOUS VERSION IS NO LONGER VALID. • © COPYRIGHT 2016 BY THERMACUT® CZECH REPUBLIC. ALL RIGHTS RESERVED.